

CK-U200CI-56RS

2 MP 1/2.8" CMOS GigE Area Scan Camera



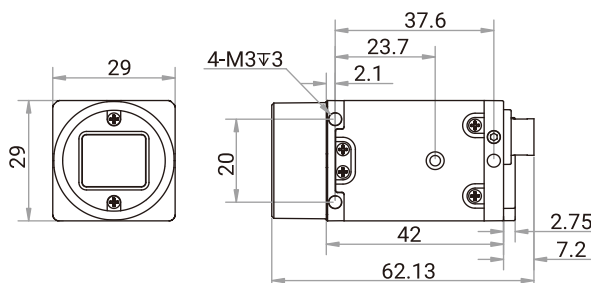
Introduction

CK-U200MI/CI-56RS camera adopts Sony® IMX290 sensor to provide high-quality images. It uses GigE interface to transmit non-compressed images in real time, and its max. frame rate can reach 56 fps in full resolution.

Key Feature

- Adopts low consumption platform with stable performance.
- Supports wide dynamic range, noise reduction and sharpness functions.
- Customized filter with strong anti-interference ability is optional.
- Supports hardware trigger, software trigger, free run, etc.
- Adopts GigE interface and max. transmission distance of 100 meters without relay.
- Compatible with GigE Vision V2.0 Protocol, GenICam Standard, and third-party software based on the protocol and standard.

Dimension



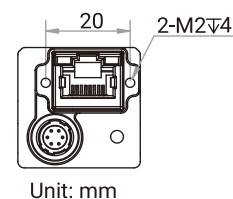
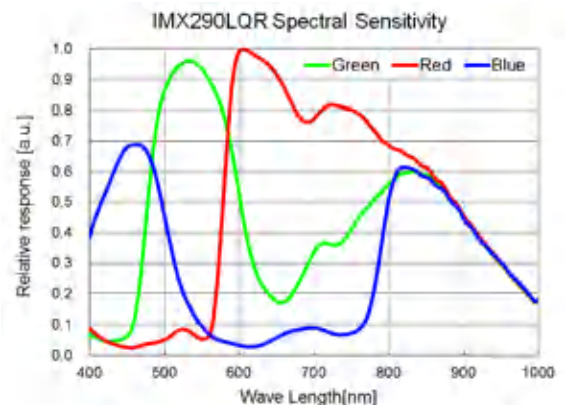
Available Model

- Mono camera: CK-U200MI-56RS
- Color camera: CK-U200CI-56RS

Applicable Industry

Mold protector, microscopy imaging, food and medicine package, etc.

Sensor Quantum Efficiency



Specification

Model	CK-U200MI-56RS	CK-U200CI-56RS
Performance		
Sensor type	CMOS, rolling shutter	
Sensor model	Sony® IMX290	
Pixel size	2.9 μm × 2.9 μm	
Sensor size	1/2.8"	
Resolution	1920 × 1080	
Max. frame rate	56 fps @1920 × 1080 Mono 8	
Dynamic range	90 dB	
SNR	41 dB	
Gain	0 dB to 24 dB	0 dB to 30 dB
Exposure time	64 μs to 130 ms	128 μs to 260 ms
Exposure mode	Off/Once/Continuous exposure mode	
Mono/color	Mono	Color
Pixel format	Mono 8	Mono 8, YUV422Packed
Binning	Supports 1 × 1, 2 × 2	Not supported
Decimation	Not supported	
Reverse image	Supports horizontal and vertical reverse image output	
Electrical feature		
Data interface	Gigabit Ethernet, compatible with Fast Ethernet	
Digital I/O	6-pin P7 connector provides power and I/O, including opto-isolated input × 1 (Line 0), opto-isolated output × 1 (Line 1), bi-directional non-isolated I/O × 1 (Line 2).	
Power supply	9 VDC to 24 VDC, supports PoE	
Power consumption	Typ. 2.1 W@12 VDC	
Mechanical		
Lens mount	C-mount	
Dimension	29 mm × 29 mm × 42 mm (1.1" × 1.1" × 1.7")	
Weight	Approx. 100 g (0.2 lb.)	
Ingress protection	IP30 (under proper lens installation and wiring)	
Temperature	Working temperature: 0 °C to 50 °C (32 °F to 122 °F) Storage temperature: -30 °C to 70 °C (-22 °F to 158 °F)	
Humidity	20% to 80% RH, non-condensing	
General		
Client software	CKVisionBuilder or third-party software meeting with GigE Vision Protocol	
Operating system	32/64-bit Windows XP/7/10, 32/64-bit Linux and 64-bit MacOS	
Compatibility	GigE Vision V2.0, GenICam	
Certification	CE, RoHS, KC	

